

# On-Demand Zone (681)

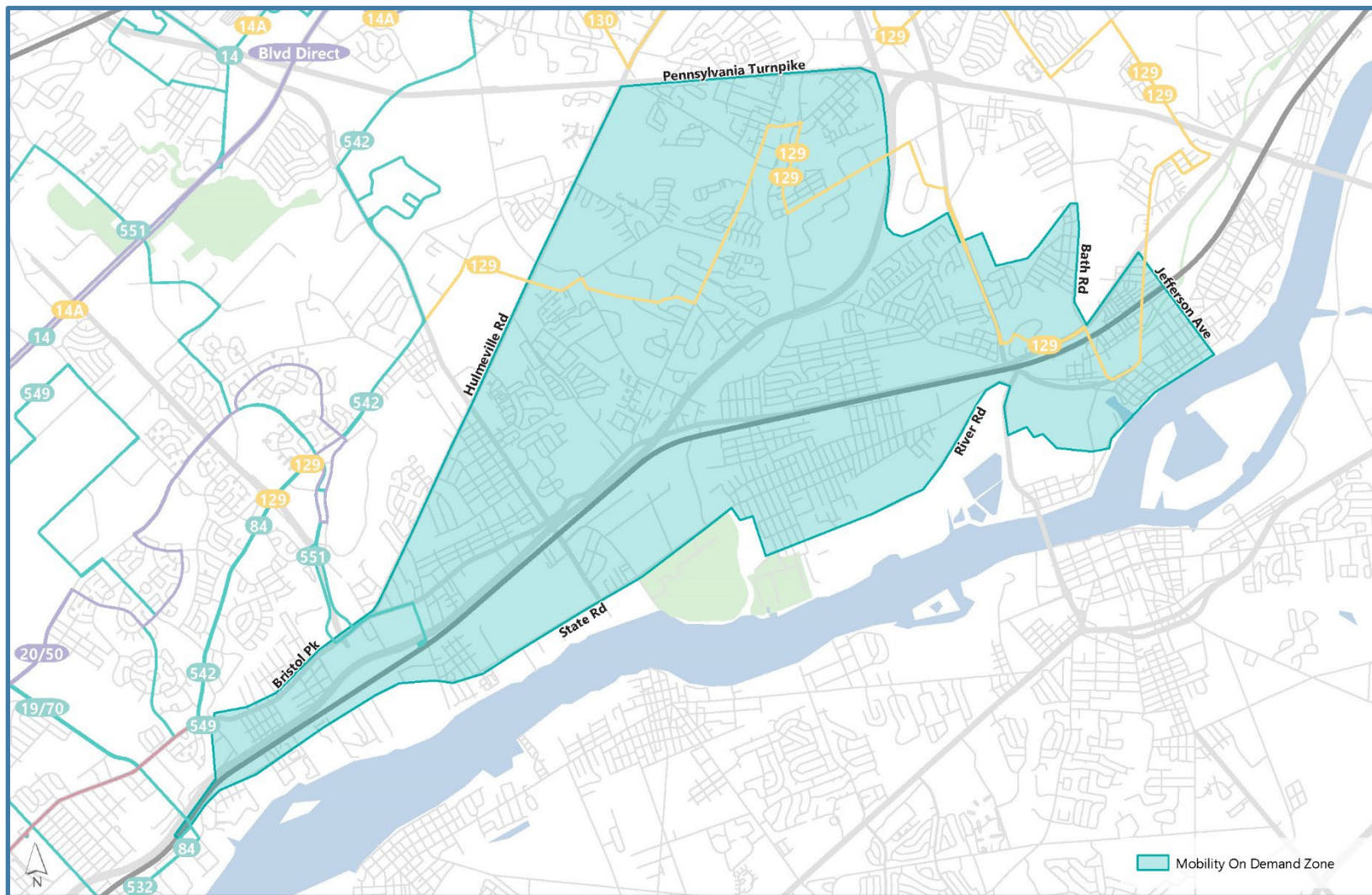
Bristol-Croydon-Cornwells Heights

We heard you! We've updated the draft network, incorporating public feedback to create a bus network that is easier to use, more convenient, and more reliable.

Visit our website at [septabusrevolution.com](http://septabusrevolution.com) to learn more:



Here's our updated recommendations for On-Demand Zone Bristol-Croydon-Cornwells Heights.



**New Route**

## On-Demand Zone: Bristol-Croydon-Cornwells Heights

A new on-demand zone in Bristol, Croydon and Cornwells Heights would serve riders who want to make local trips, connect to employment, shopping, and schools. Riders can use the on-demand to travel anywhere in the zone and to connect with other SEPTA bus routes (multiple routes at Frankford-Knights and Torresdale Station; new route 14/84 at Cornwells Heights Station; Route 129 to Oxford Valley Mall at multiple locations within the zone). The on-demand zone will replace service currently provided by Routes 128, 129, and 133, which are infrequent and do not carry many riders. The on-demand zone is designed to be a more convenient, easier to use service as compared with infrequent bus service.

## Updated Proposed Schedules for On-Demand Zone Bristol-Croydon-Cornwells Heights:



<b>WEEKDAYS</b>																														
EXISTING & PROPOSED ROUTES	SERVICE SPAN	4AM	5AM	6AM	7AM	8AM	9AM	10AM	11AM	12PM	1PM	2PM	3PM	4PM	5PM	6PM	7PM	8PM	9PM	10PM	11PM	12AM	1AM	2AM	3AM					
PROPOSED ZONE 681	6 AM TO 9 PM	-	-	AVERAGE 30 MIN WAIT TIME														-	-	-	-	-	-	-	-	-	-	-	-	-

<b>SATURDAYS</b>																														
EXISTING & PROPOSED ROUTES	SERVICE SPAN	4AM	5AM	6AM	7AM	8AM	9AM	10AM	11AM	12PM	1PM	2PM	3PM	4PM	5PM	6PM	7PM	8PM	9PM	10PM	11PM	12AM	1AM	2AM	3AM					
PROPOSED ZONE 681	6 AM TO 9 PM	-	-	AVERAGE 30 MIN WAIT TIME														-	-	-	-	-	-	-	-	-	-	-	-	-

<b>SUNDAYS</b>																														
EXISTING & PROPOSED ROUTES	SERVICE SPAN	4AM	5AM	6AM	7AM	8AM	9AM	10AM	11AM	12PM	1PM	2PM	3PM	4PM	5PM	6PM	7PM	8PM	9PM	10PM	11PM	12AM	1AM	2AM	3AM					
PROPOSED ZONE 681	6 AM TO 9 PM	-	-	AVERAGE 30 MIN WAIT TIME														-	-	-	-	-	-	-	-	-	-	-	-	-